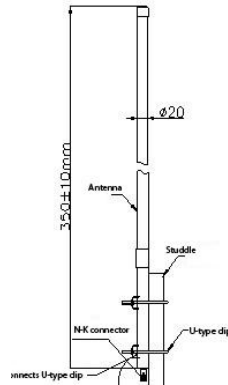


## WPANT30087-R1A

### 900 MHz ISM band Omni-directional Antenna



**Note:** This is a physical drawing of the actual Antenna.

### Description / Application

This is an Omni-directional Pole/Wall mount antenna that operates in the 900 – 960 MHz ISM / cellular band. It comes with a Type-N male connector. The antenna is at DC ground to ensure protection against lightning.

We can assist your engineers to optimize mounting positions for these antennas in your specific application and can further customize the antennas for your specific needs. Please contact [sales@worldproducts.com](mailto:sales@worldproducts.com) with your specific application requirements.

### Electrical Properties

<b>Operating Frequency</b>	900 – 960 MHz
<b>Approximate Antenna Impedance [Ω]</b>	50Ω
<b>VSWR – Typical</b>	< 2:1
<b>Peak Gain [dBi] (Typical)</b>	3 dBi
<b>Polarization</b>	Vertical
<b>Pattern</b>	Omni Directional
<b>Accepted Power [W] (Max)</b>	50 Watts
<b>Lightning Protection</b>	DC ground

### Mechanical / Environmental Properties

<b>Antenna Dimensions</b>	13.8" Height X 0.8" (Dia) (350mm X 20mm)
<b>Antenna Color</b>	White
<b>Connector</b>	Type-N Male
<b>Antenna Radome</b>	Fiberglass
<b>Operating / Storage Temperature</b>	-40°C to +90°C
<b>Environmental</b>	Meets standards for UL 94V-0
<b>Hazardous Materials</b>	RoHS Compliant

Pictures of the Antenna (Drawing)

